

Michigan State University

Wheat Breeding and Genetics

Soft red winter wheat variety release

Dr. Eric Olson, Amanda Noble, Sam Martin, Dennis Pennington

MI14R1140

Soft Red Winter Wheat Ambassador/Shirley

- Competitive grain yield
- Stripe rust, leaf rust and powdery mildew resistance
- Can be managed with a single fungicide at flowering
- Very early flowering provides the opportunity to split variety maturities

Line	2017/18 Yield	JDF	Height
DF112R	92.2	148.7	31.0
SY 100	90.4	149.7	30.0
MI14R1140	88.3	147.0	32.7
AM 413	87.0	148.0	32.0
<i>Mean</i>	<i>90.0</i>	<i>148.4</i>	<i>31.4</i>
<i>LSD (0.10)</i>	<i>5.2</i>	<i>1.5</i>	<i>2.1</i>

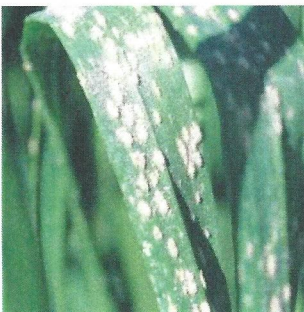
Grain yield is in bushels per acre from two years of yield testing at five locations in Michigan

JDF is the number of days past January 1

Plant height is in inches

Line	Field Summary	Stripe Rust 0-9
Hilliard	MR	4
P25R46	S	9
MI14R1140	MR	3

- MI14R1140 has exceptional resistance to stripe rust



Line	Pm 0-9
P25R46	3.7
Hilliard	1.2
MI14R1140	0.0

- MI14R1140 has outstanding resistance to powdery mildew

